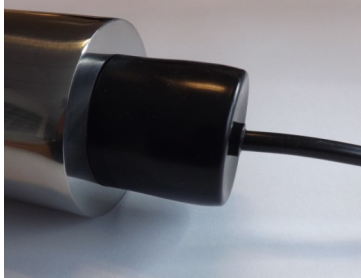


PRODUCT INFORMATION

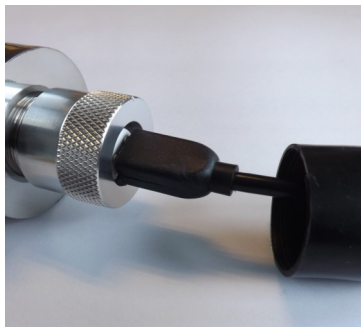
PROSEP
FILTER SYSTEMS LTD

LAMP AND QUARTZ SLEEVE REMOVAL UV-PRO

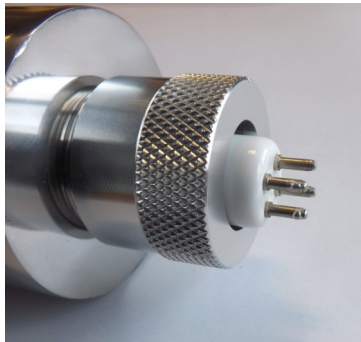
SWITCH OFF AND DISCONNECT POWER FROM THE UV UNIT BEFORE CARRYING OUT ANY OF THE FOLLOWING STEPS



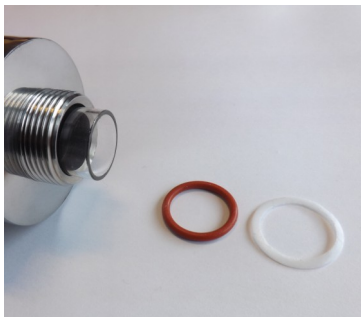
Remove the cover from the end of the UV chamber



Remove plug connector from the end of the lamp



Slide out the lamp



Unscrew the knurled nut from each end of the chamber.
Remove the PTFE slip ring and O ring from both ends of the chamber.

Carefully slide out the Quartz sleeve making sure that you support both ends of the quartz to prevent it from dropping onto the inside

Prosep Filter Systems Ltd
Unit G19, River Bank Way,
Lowfields Business Park,
Elland, West Yorkshire
HX5 9DN

Phone: 01422 377367
email: sales@prosep.co.uk
www.prosep.co.uk



for all your filter requirements