

## 424Series

## WFH424

Fuel Heater/Water Separator



Want proven reliability? A Racor 424 Fuel Heater/Water Separators are for today's high performance heavy-duty and smaller midrange engines. These lightweight aluminum units use engine coolant to produce a 47° F rise in fuel temperature, eliminating the need for fuel blending.

A 424's three-stage water separation process is more than 99% effective in eliminating water from fuel under SAE J1839 test parameters.

Stage 1: A self-cleaning stripper screen removes water and solid contaminants from the fuel, so no primary fuel filter is required.

Stage 2: Fuel contaminants and water are drained by the driver through the unit's self-venting drain valve.

Stage 3: A floating check ball valve system guards against loss of prime during service.



## Specifications

Maximum Flow Rate: (with diesel)	60 GPH (227 LPH)
Inlet/Outlet Port Size	1/2 NPT
Housing Material	Aluminum
Replacement Element	Screen
Micron Rating	70
Minimum Service Clearance (below filter)	4.0 in. (10.2 cm)
Height	10.0 in. (25.4 cm)
Depth	5.9 in. (15.0 cm)
Width	5.3 in. (13.5 cm)
Weight (dry)	6.3 lbs (2.9 kg)
Maximum Working Pressure <sup>1</sup>	N/A
Water Removal Efficiency	99%
Clean Pressure Drop	0.04 PSI (0.28 kPa)
Case Quantity	-
Ambient Temperature Range	-40° to +250°F (-40° to +121°C)
Maximum Fuel Temperature	190°F (32°C)

Notes: <sup>1</sup>Vacuum side installations only.

Questions? Contact Technical Support:  
800 344 3286 or 209 521 7860 ext. 7555  
e-mail: racortech@parker.com

## 424 Series

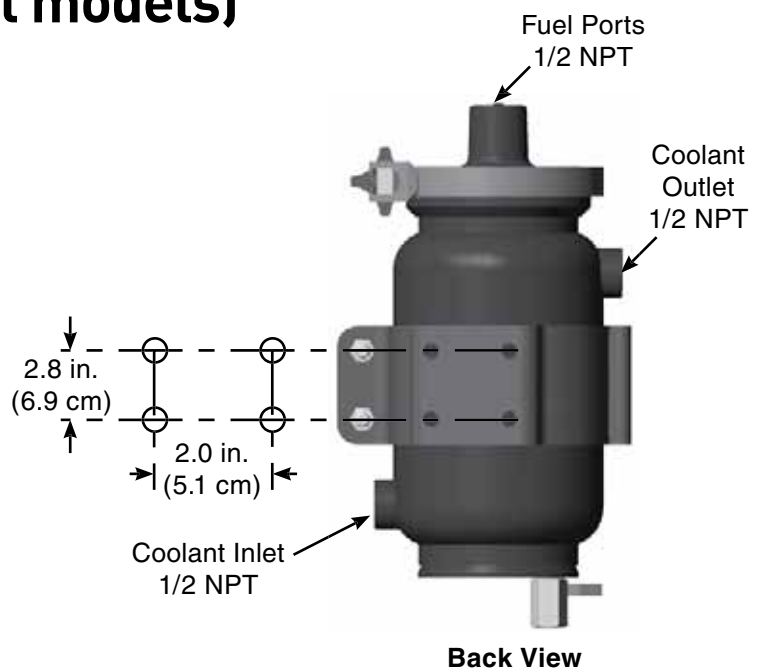
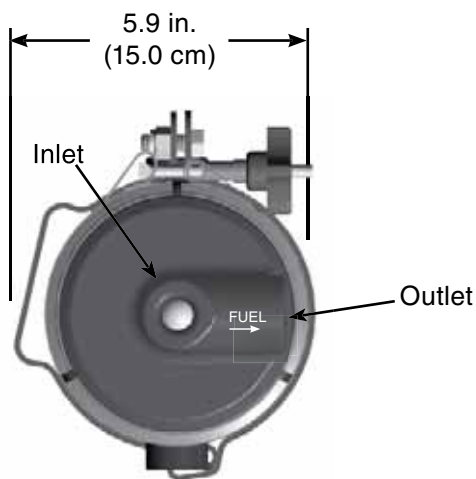
### How to Order

#### WFH424

Basic Model Comes standard with a 70 Micron Stripper Screen and Mounting Brackets.



### Mounting Information (all models)



## 424 Series

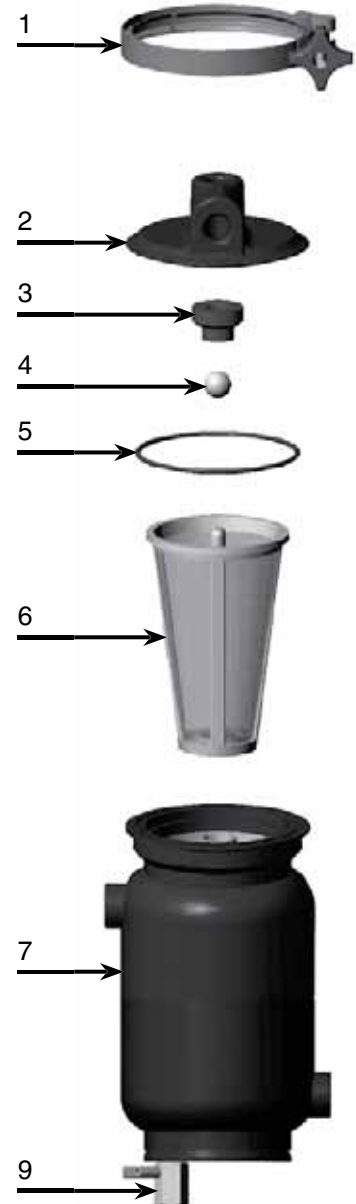
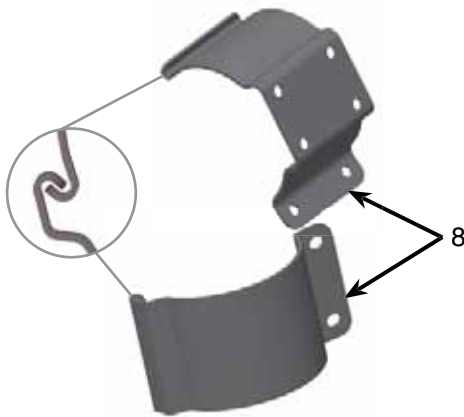
## Replacement Parts

<u>Part Number</u>	<u>Description</u>
1. <b>WFH5760</b>	Cover Clamp Kit
2. <b>WFH5726X</b>	424 Cover Kit
3. <b>WFH5731C</b>	Stopper Seal Kit
4. <b>WFH5731K</b>	Check Ball Kit
5. <b>WFH5730P</b>	O-ring Kit
6. <b>WFH4732</b>	70 Micron Screen Kit (includes #5)
7. <b>WFH4738</b>	424 Body Kit
8. <b>WFH4736</b>	Mounting Bracket Kit
9. <b>WFH5742</b>	Ball Valve Kit

Additional Parts (not shown)

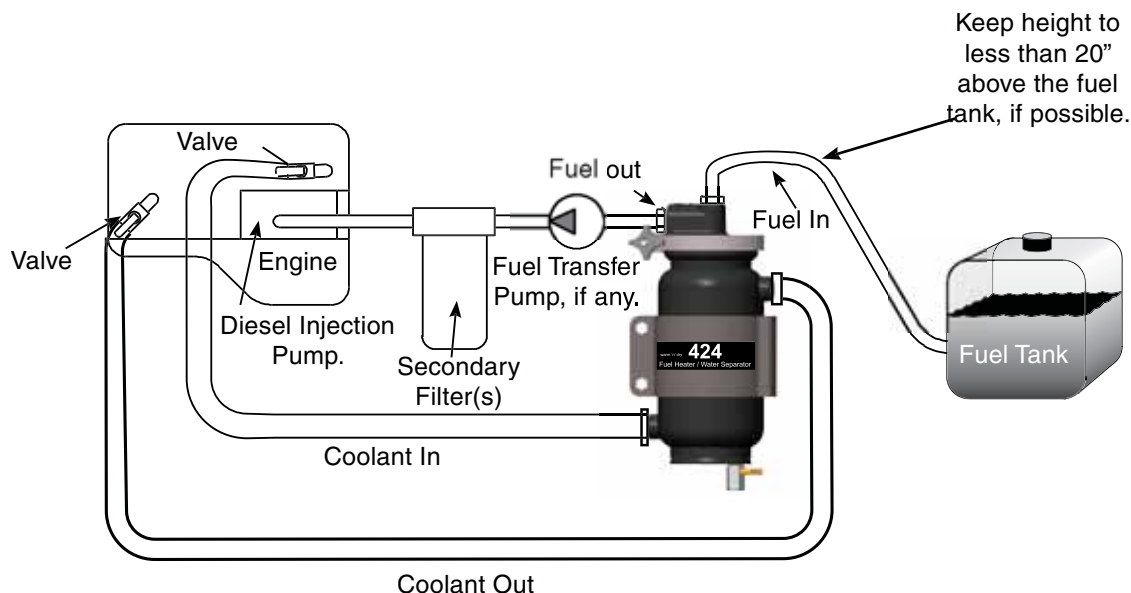
**BK38100L** Bolt Kit

**WFH4750K** 424 Complete Rebuild Kit



## 424 Series

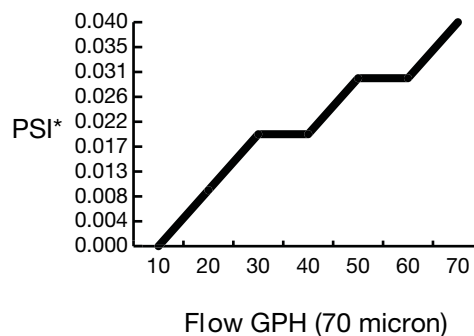
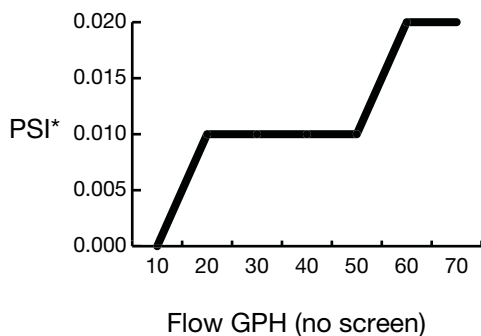
### Installation Diagram



**Note:** Coolant must be maintained according to engine manufacturers specifications. Improperly maintained coolant may cause damage to this product and other components. If any work is performed on the cooling system, be sure properly maintained coolant is circulated through the fuel heater or freeze damage may occur.

### Test Data

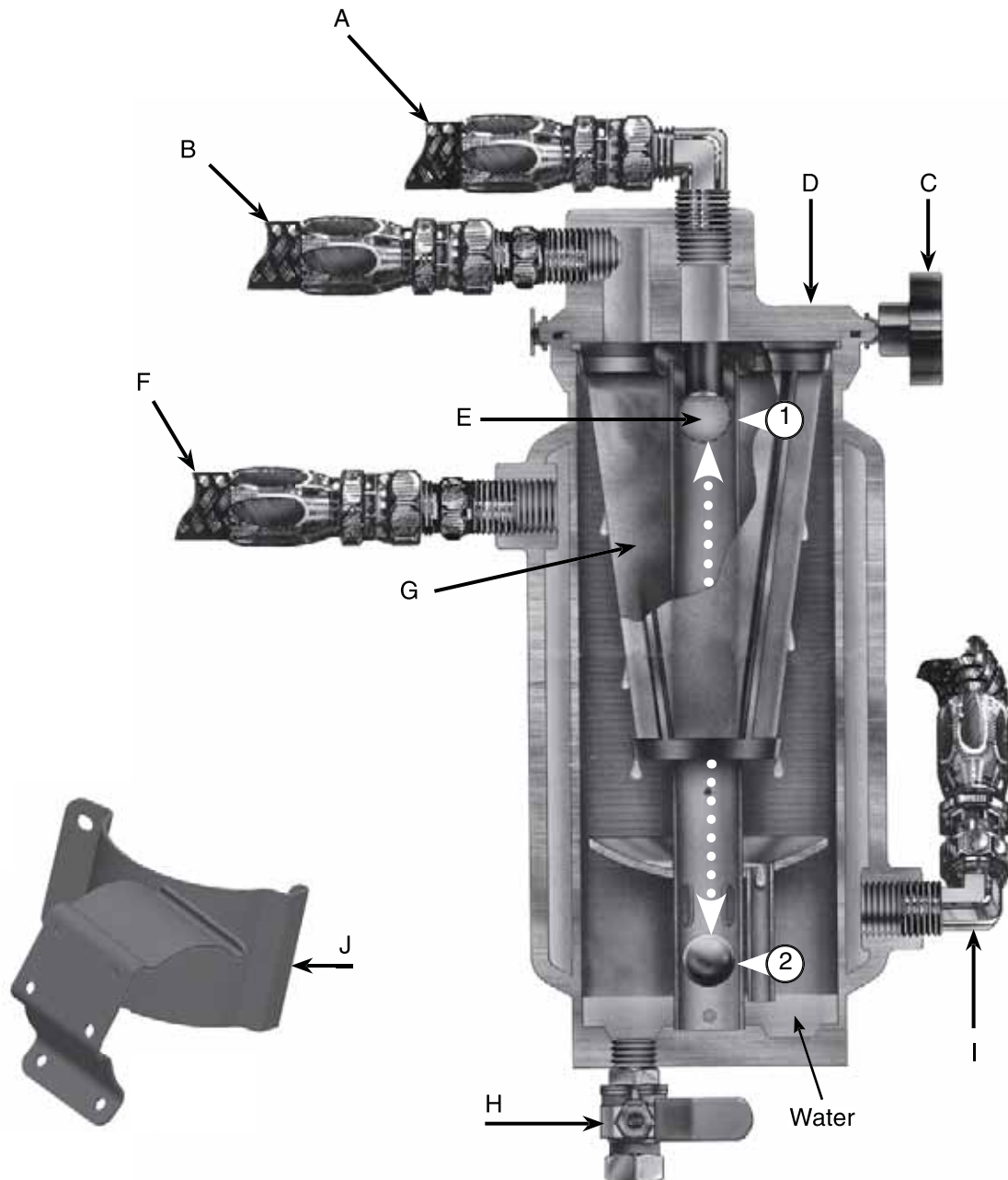
Test results are from controlled laboratory testing. Field results may vary by application.



\*PSI X 2.036 = inHg (PSI X 6.895 = kPa)

# 424 Series

Please refer to page 96 for call out descriptions.





01422 377367



enquiries@prosep.co.uk

**PROSEP**  
FILTER SYSTEMS LTD

WE ARE YOUR '**ONE STOP SHOP**' FOR ALL  
OF YOUR FILTRATION REQUIREMENTS

**LIQUID FILTRATION**

- CARTRIDGES
- FILTER BAGS
- VESSELS
- STRAINERS

**AIR FILTRATION**

- VENT FILTERS
- STERILE AIR
- VACCUM
- AIR-CONDITIONING
- FILTER MEDIA

**DOMESTIC**

- ULTRAVIOLET
- TREATMENT OF BOREHOLES,  
SPRINGS & WELLS
- WATER TESTING

**FUEL FILTRATION**

- DIESEL, AVIATION



**Prosep Filter Systems Ltd**  
Unit G19, River Bank Way,  
Lowfields Business Park,  
Elland, West Yorkshire  
HX5 9DN

**Phone: 01422 377367**  
email: [sales@prosep.co.uk](mailto:sales@prosep.co.uk)  
[www.prosep.co.uk](http://www.prosep.co.uk)



*for all your filter requirements*