

424Series

WFH424

Fuel Heater/Water Separator



Want proven reliability? A Racor 424 Fuel Heater/Water Separators are for today's high performance heavy-duty and smaller midrange engines. These lightweight aluminum units use engine coolant to produce a 47° F rise in fuel temperature, eliminating the need for fuel blending.

A 424's three-stage water separation process is more than 99% effective in eliminating water from fuel under SAE J1839 test parameters.

Stage 1: A self-cleaning stripper screen removes water and solid contaminants from the fuel, so no primary fuel filter is required.

Stage 2: Fuel contaminants and water are drained by the driver through the unit's self-venting drain valve.

Stage 3: A floating check ball valve system guards against loss of prime during service.



Specifications

Maximum Flow Rate: (with diesel)	60 GPH (227 LPH)
Inlet/Outlet Port Size	1/2 NPT
Housing Material	Aluminum
Replacement Element	Screen
Micron Rating	70
Minimum Service Clearance (below filter)	4.0 in. (10.2 cm)
Height	10.0 in. (25.4 cm)
Depth	5.9 in. (15.0 cm)
Width	5.3 in. (13.5 cm)
Weight (dry)	6.3 lbs (2.9 kg)
Maximum Working Pressure ¹	N/A
Water Removal Efficiency	99%
Clean Pressure Drop	0.04 PSI (0.28 kPa)
Case Quantity	-
Ambient Temperature Range	-40° to +250°F (-40° to +121°C)
Maximum Fuel Temperature	190°F (32°C)

Notes: ¹Vacuum side installations only.

Questions? Contact Technical Support:
800 344 3286 or 209 521 7860 ext. 7555
e-mail: racortech@parker.com

424 Series

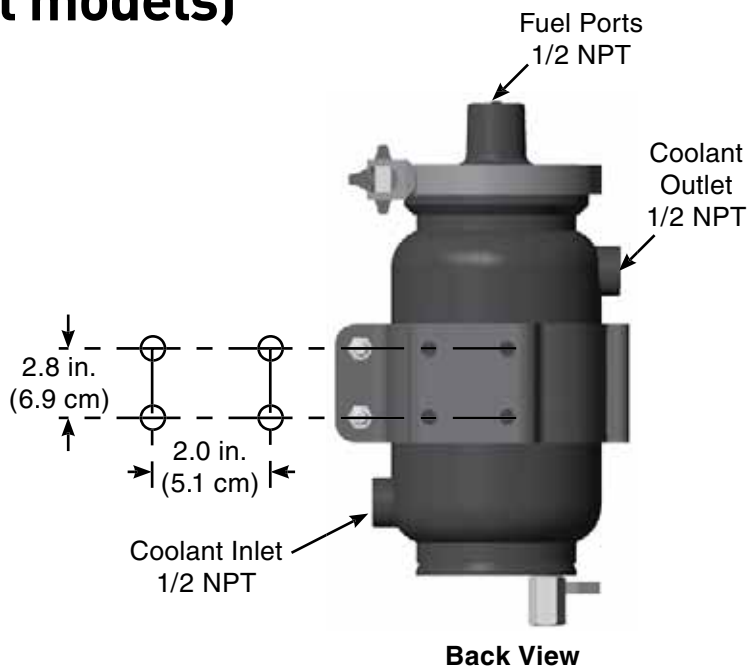
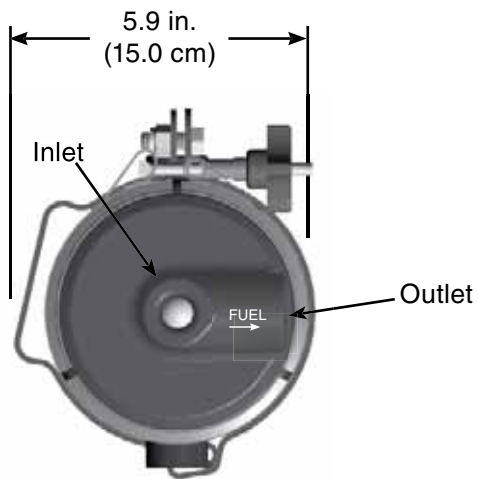
How to Order

WFH424

Basic Model Comes standard with a 70 Micron Stripper Screen and Mounting Brackets.



Mounting Information (all models)



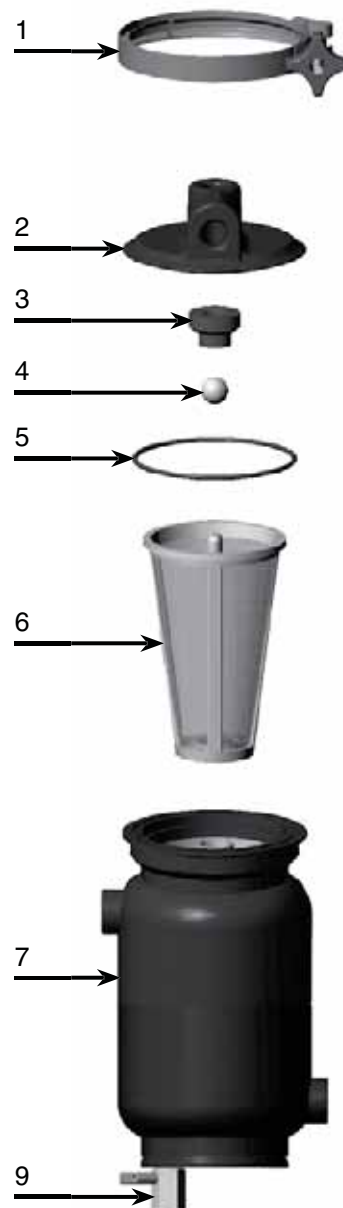
424 Series

Replacement Parts

<u>Part Number</u>	<u>Description</u>
1. WFH5760	Cover Clamp Kit
2. WFH5726X	424 Cover Kit
3. WFH5731C	Stopper Seal Kit
4. WFH5731K	Check Ball Kit
5. WFH5730P	O-ring Kit
6. WFH4732	70 Micron Screen Kit (includes #5)
7. WFH4738	424 Body Kit
8. WFH4736	Mounting Bracket Kit
9. WFH5742	Ball Valve Kit

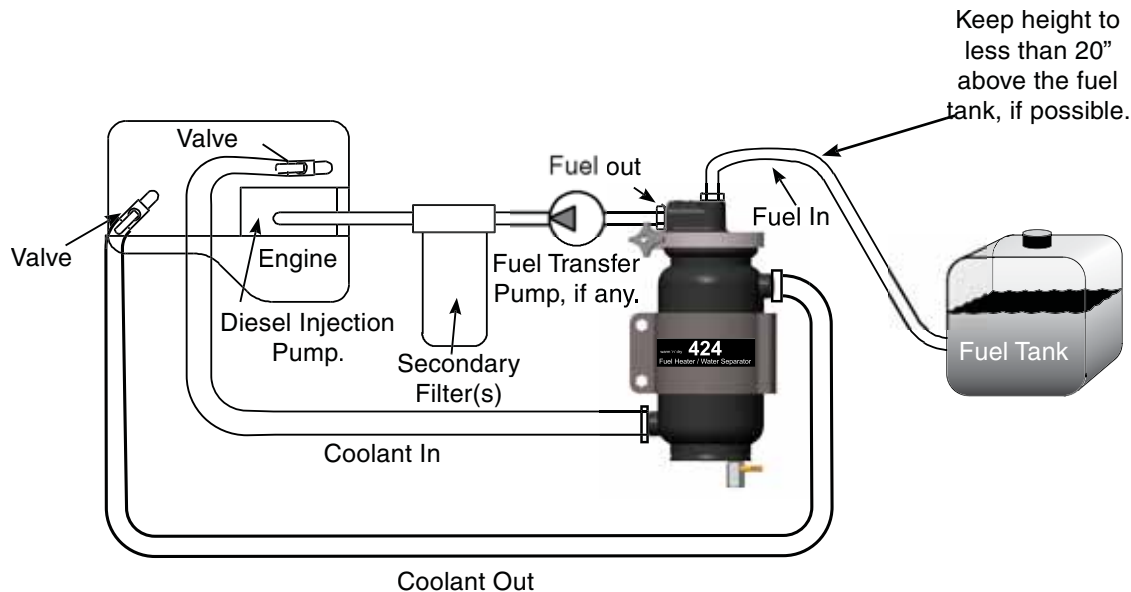
Additional Parts (not shown)

BK38100L	Bolt Kit
WFH4750K	424 Complete Rebuild Kit



424 Series

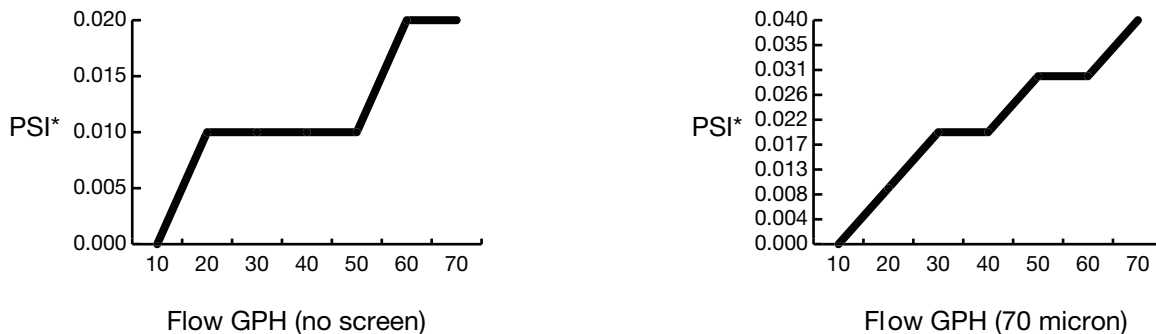
Installation Diagram



Note: Coolant must be maintained according to engine manufacturers specifications. Improperly maintained coolant may cause damage to this product and other components. If any work is performed on the cooling system, be sure properly maintained coolant is circulated through the fuel heater or freeze damage may occur.

Test Data

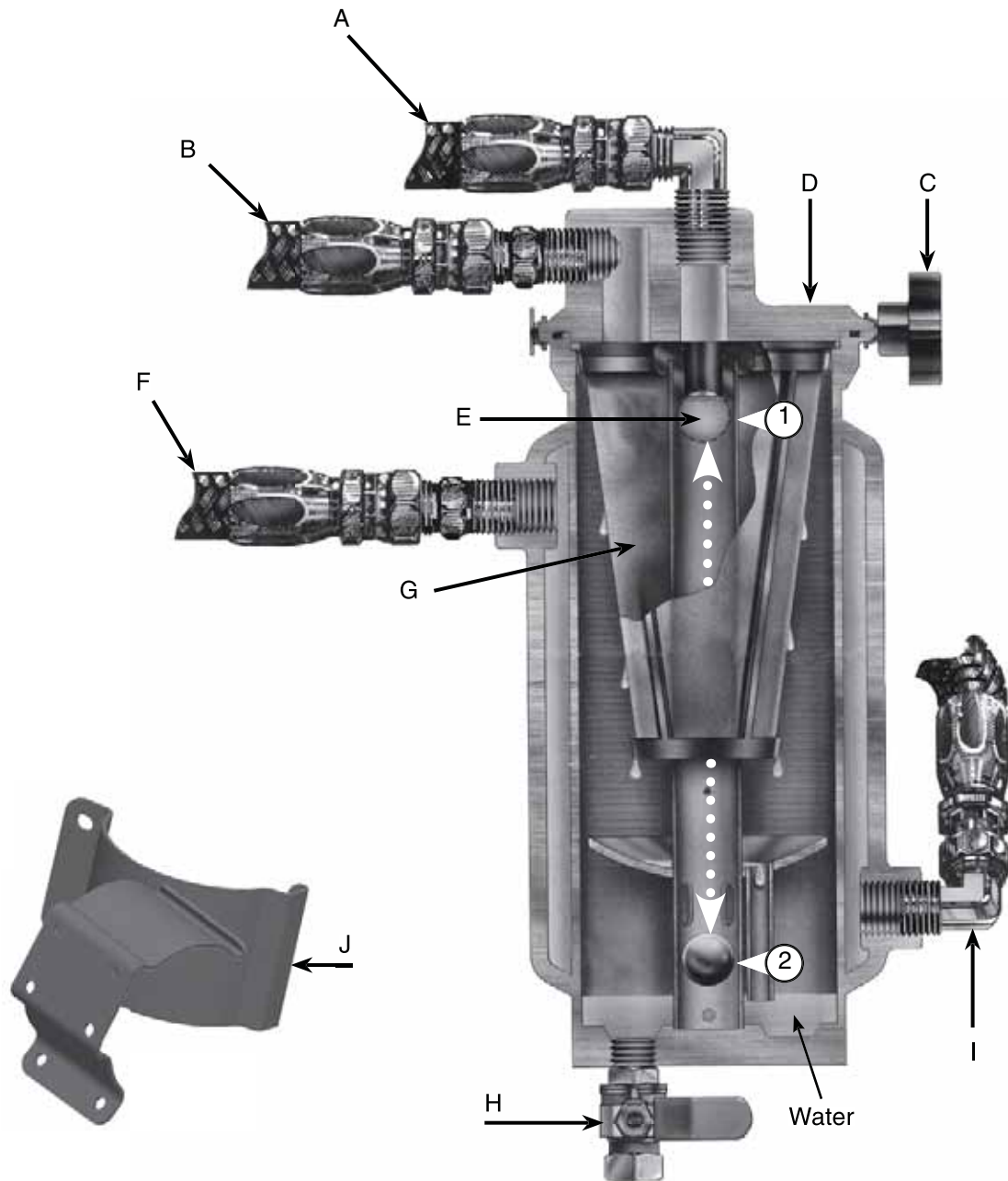
Test results are from controlled laboratory testing. Field results may vary by application.



*PSI X 2.036 = inHg (PSI X 6.895 = kPa)

424 Series

Please refer to page 96 for call out descriptions.



Questions? Contact Technical Support:
800 344 3286 or 209 521 7860 ext. 7555
e-mail: racortech@parker.com

PROSEP FILTER SYSTEMS LTD
Unit G19
River Bank Way
Lowfields Business Park
Elland
West Yorkshire
HX5 9DN

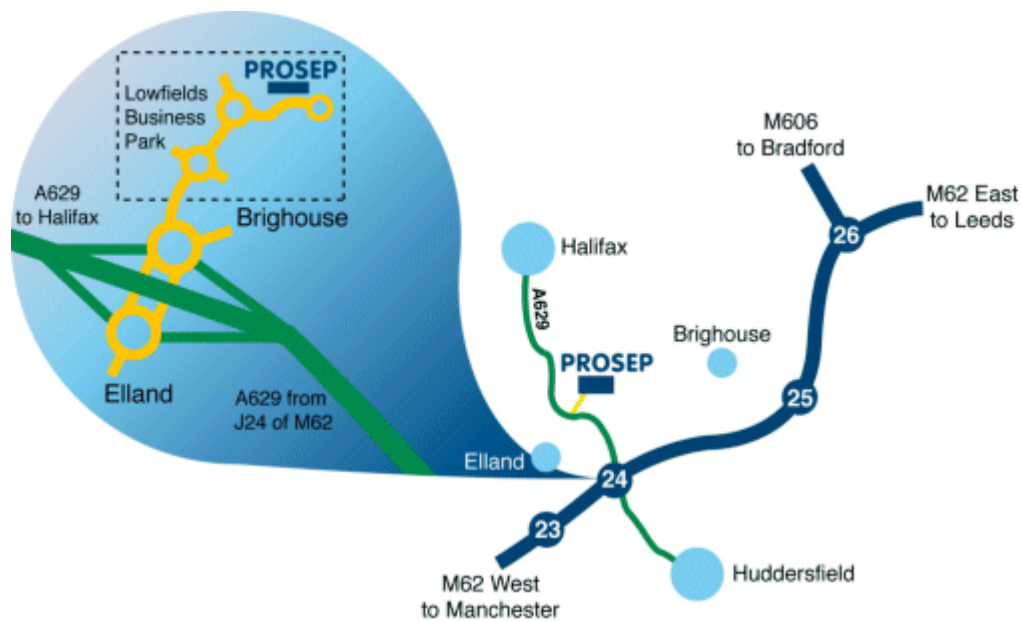
Tel: 01422 377367

Fax: 01422 377369

Email: enquiries@prosep.co.uk

www.prosep.co.uk

Map and Directions to Prosep Filters Limited



Leave M62 at Junction 24.

At roundabout adjacent to Cedar Court Hotel take 2nd exit onto dual carriageway (A629), signposted Halifax.

Take 1st exit slip road.

At roundabout at end of sliproad, take 3rd exit off.

This is the entrance to Lowfields Business Park.

Proceed straight over 1st roundabout.

At next roundabout take 2nd exit onto River Bank Way - Prosep Filters can be found on the left after the S-bend.

[Link to Google Maps](#)