

# 200 Series

Racor's Marine Spin-On 200 Series fuel filter/water separators are available in three sizes to fit any engine compartment. All three assemblies feature 1/4"-18 NPTF inlet and outlet fuel ports, a unitized mounting bracket for mounting versatility, an in-head primer pump for quick fuel system priming, a metal sediment and water collection bowl (safe for inboard use), a vent plug to easily evacuate trapped air, and a 10 micron AquablocII filter element which repels nearly 100% of all free water found in fuel.

If quality is what you want and filtration is what you need, then a Racor 200 Series fuel filter/water separator is the answer. Experienced sailors trust their engines, their livelihood and even their lives to Racor. Shouldn't you?



215RMAM



230RMAM



245RMAM



## 200 Series

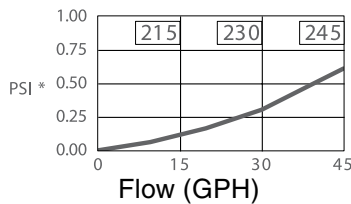
### 200 Series Overview



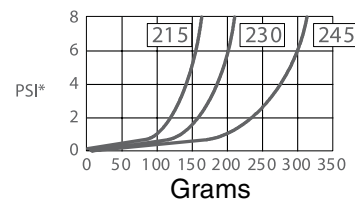
Specifications	215RMAM	230RMAM	245RMAM
<b>Maximum Flow Rate</b>	15 GPH (57 LPH)	30 GPH (114 LPH)	45 GPH (170 LPH)
<b>Port Size</b>	¼"-18 NPTF	¼"-18 NPTF	¼"-18 NPTF
<b>Number of Ports:</b> <i>Inlets</i> <i>Outlets</i>	1 2	1 2	1 2
<b>Replacement Element</b>	R15TUL	R20TUL	R25TUL
<b>Center Threads</b>	1"-14	1"-14	1"-14
<b>Height</b>	8.3 in. (21.1 cm)	9.0 in. (22.9 cm)	10.5 in. (26.7 cm)
<b>Width</b>	4.0 in. (10.2 cm)	4.0 in. (10.2 cm)	4.0 in. (10.2 cm)
<b>Depth</b>	4.0 in. (10.2 cm)	4.0 in. (10.2 cm)	4.0 in. (10.2 cm)
<b>Weight</b>	1.8 lb (0.8 kg)	2.0 lb (0.9 kg)	2.2 lb (1.0 kg)
<b>Clean Pressure Drop</b>	0.12 PSI (0.83 kPa)	0.31 PSI (2.14 kPa)	0.61 PSI (4.21 kPa)
<b>Maximum Operating Pressure</b>	30 PSI (207 kPa)	30 PSI (207 kPa)	30 PSI (207 kPa)
<b>Bowl Capacity</b>	2.0 oz (58 ml)	2.0 oz (58 ml)	2.0 oz (58 ml)
<b>Water Removal Efficiency</b>	99%	99%	99%
<b>Ambient Fuel Temperature</b>	-40° to +250°F (-40° to +121°C)		
<b>Max. Fuel Temperature</b>	190°F (32°C)		

### Test Data

(Test results are from controlled laboratory testing. Field results may vary.)



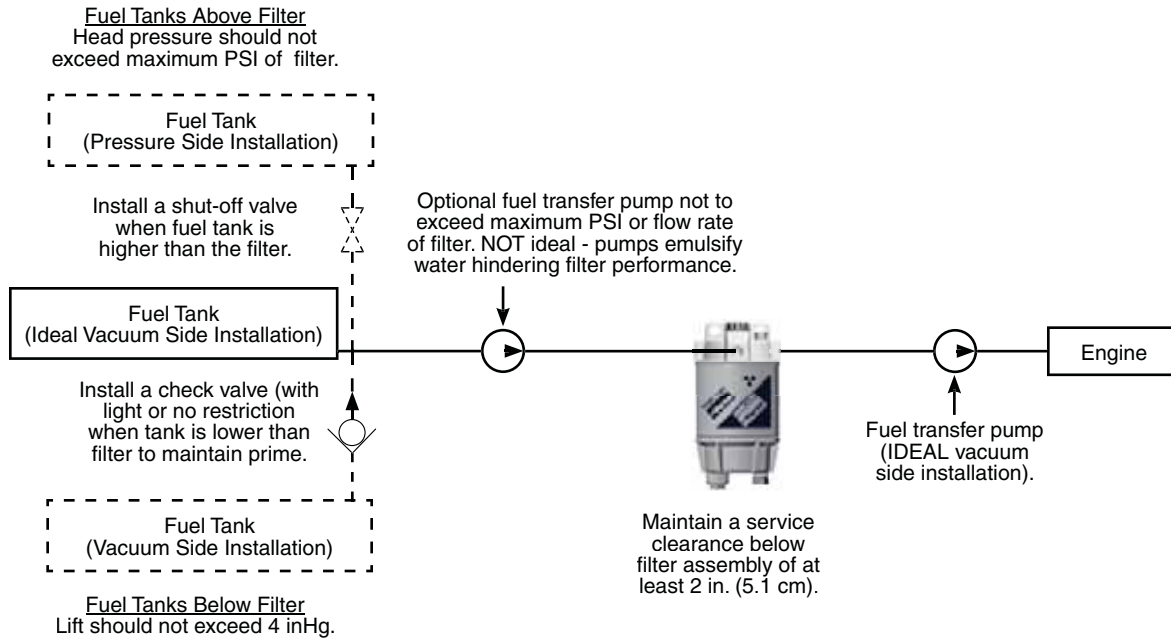
SAE J905 Fuel Flow Restriction



SAE J905 Solids Capacity  
(using SOFTC-2A; 10 mic. Element)

\*PSI X 2.036 = inHg. / PSI X 6.895 = kPa

# Installation Diagram



Installation diagram applies to all 200 Series filters. Model 215RMM shown above. Racor offers hose and fittings to complete this installation. See Marine Accessories.

# Mounting Information



## 200 Series

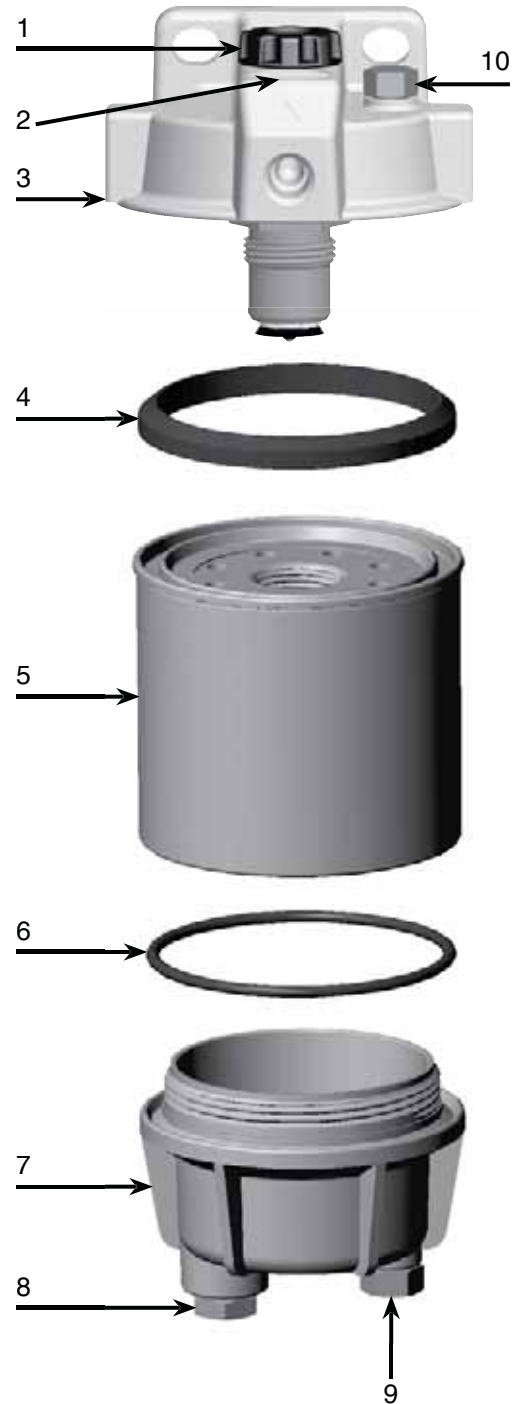
### Replacement Parts

#### 215RMAM, 230RMAM and 245RMAM

Part No.	Description
1. <b>RK20025-01</b>	Primer Pump Kit
2. <b>RK20011-01</b> <b>RK 20742</b>	Checkball Kit with Plastic Cap Metal Cap Kit
3. <b>RK20046-01</b>	Head Kit (1/4" NPTF Ports) (includes #'s 1-4)
4. <b>RK 22061</b>	Gasket Kit
5. Replacement Elements (includes #'s 4 and 6) <b>R15TUL</b> <b>R20TUL</b> <b>R25TUL</b>	10 Micron (UL Recognized) 10 Micron (UL Recognized) 10 Micron (UL Recognized)
6. <b>RK 22244</b>	Bowl O-ring Kit
7. <b>RK 22368</b>	Metal Bowl Kit (includes #'s 6, 8 and 9) (3/8" NPT drain Plug) (1/2"-20 probe port)
8. <b>918-N6</b>	Steel Plug (3/8" NPT)
9. <b>RK 20022</b>	Metal Plug Kit (1/2"-20 UNF)
10. <b>RK 10110</b>	Metal Vent Plug Kit (3/8"-16 UNF)

#### Additional Parts (not shown)

<b>RK20075-01</b>	Complete Seal Service Kit
<b>RK 12041</b>	Port Plug Kit (1/4" NPT)
<b>22360</b>	Installation Instructions



PROSEP FILTER SYSTEMS LTD  
Unit G19  
River Bank Way  
Lowfields Business Park  
Elland  
West Yorkshire  
HX5 9DN

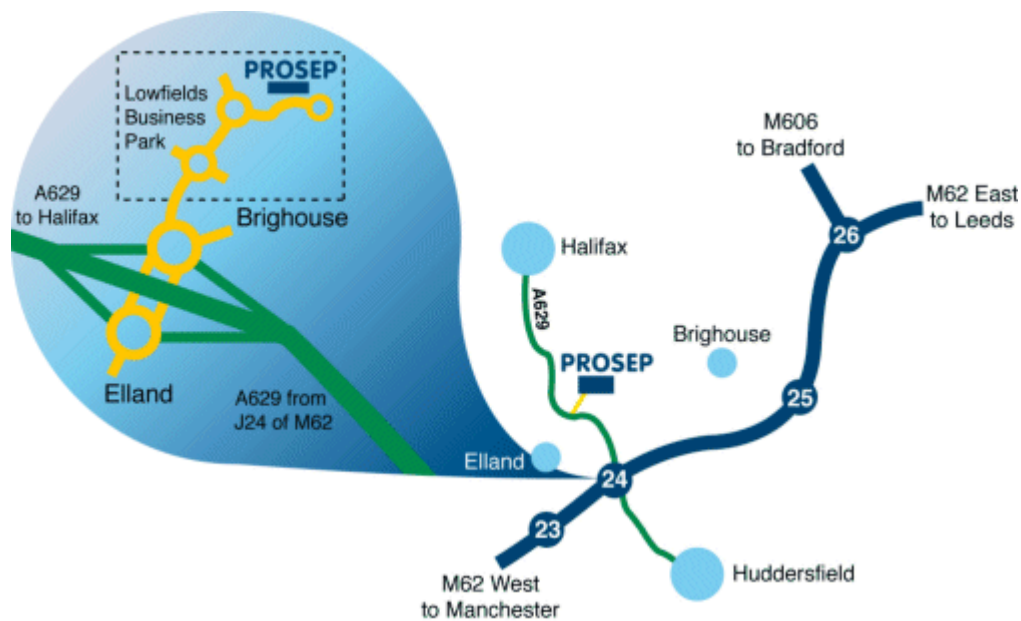
**Tel: 01422 377367**

**Fax: 01422 377369**

Email: [enquiries@prosep.co.uk](mailto:enquiries@prosep.co.uk)

[www.prosep.co.uk](http://www.prosep.co.uk)

**Map and Directions to Prosep Filters Limited**



Leave M62 at Junction 24.

At roundabout adjacent to Cedar Court Hotel take 2nd exit onto dual carriageway (A629), signposted Halifax.

Take 1st exit slip road.

At roundabout at end of sliproad, take 3rd exit off.

This is the entrance to Lowfields Business Park.

Proceed straight over 1st roundabout.

At next roundabout take 2nd exit onto River Bank Way - Prosep Filters can be found on the left after the S-bend.

[Link to Google Maps](#)